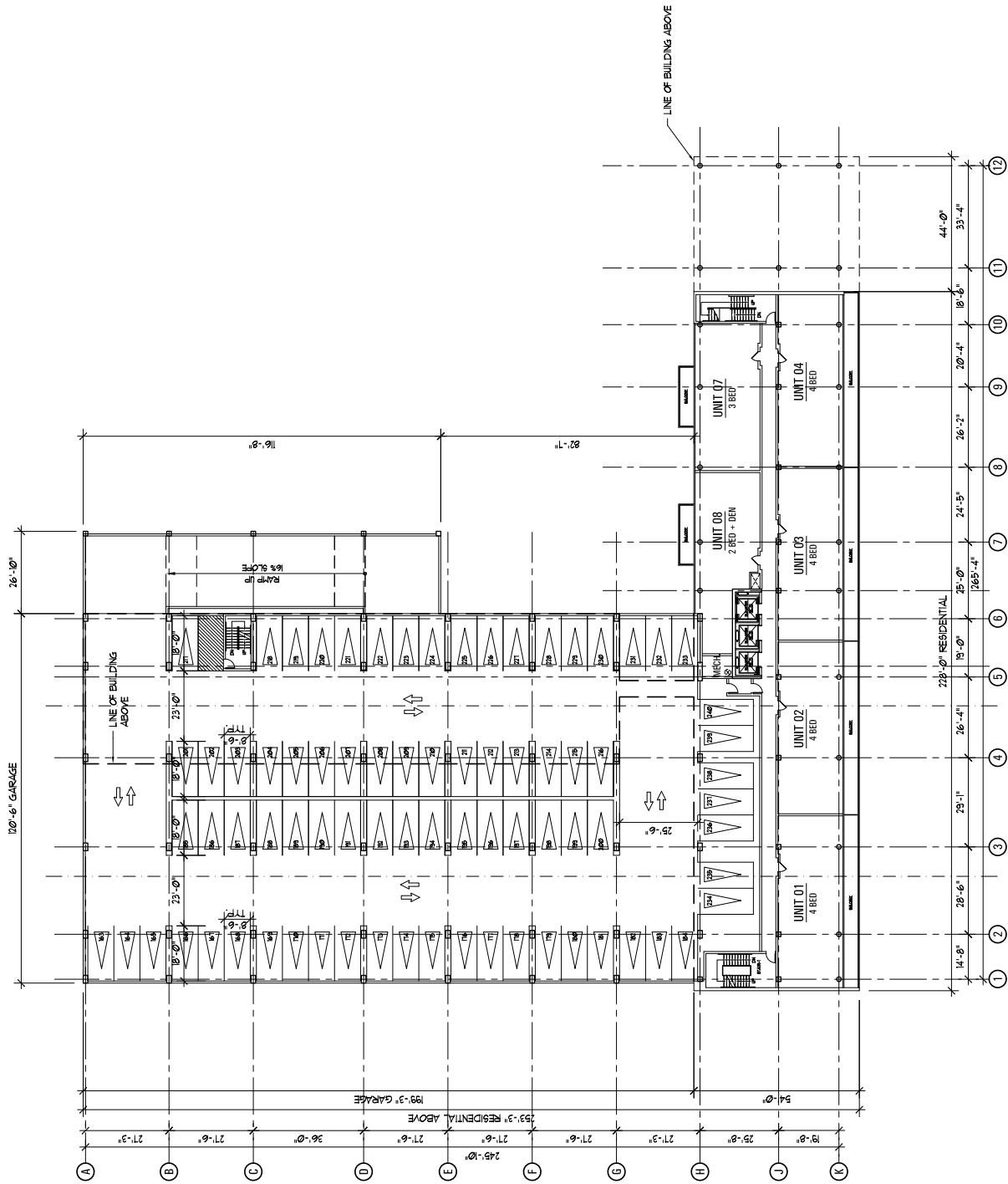


ATTACHMENT 26

ATTACHMENT 26



1 SECOND FLOOR PLAN  
SCALE: 1/16" = 1'-0"



I, **Matthew Thomas Lusk**, a duly Licensed Professional Engineer in the State of Arizona, do hereby certify that the above is a true and correct copy of the original as submitted to me for review and approval. I am not responsible for any errors or omissions in this document.

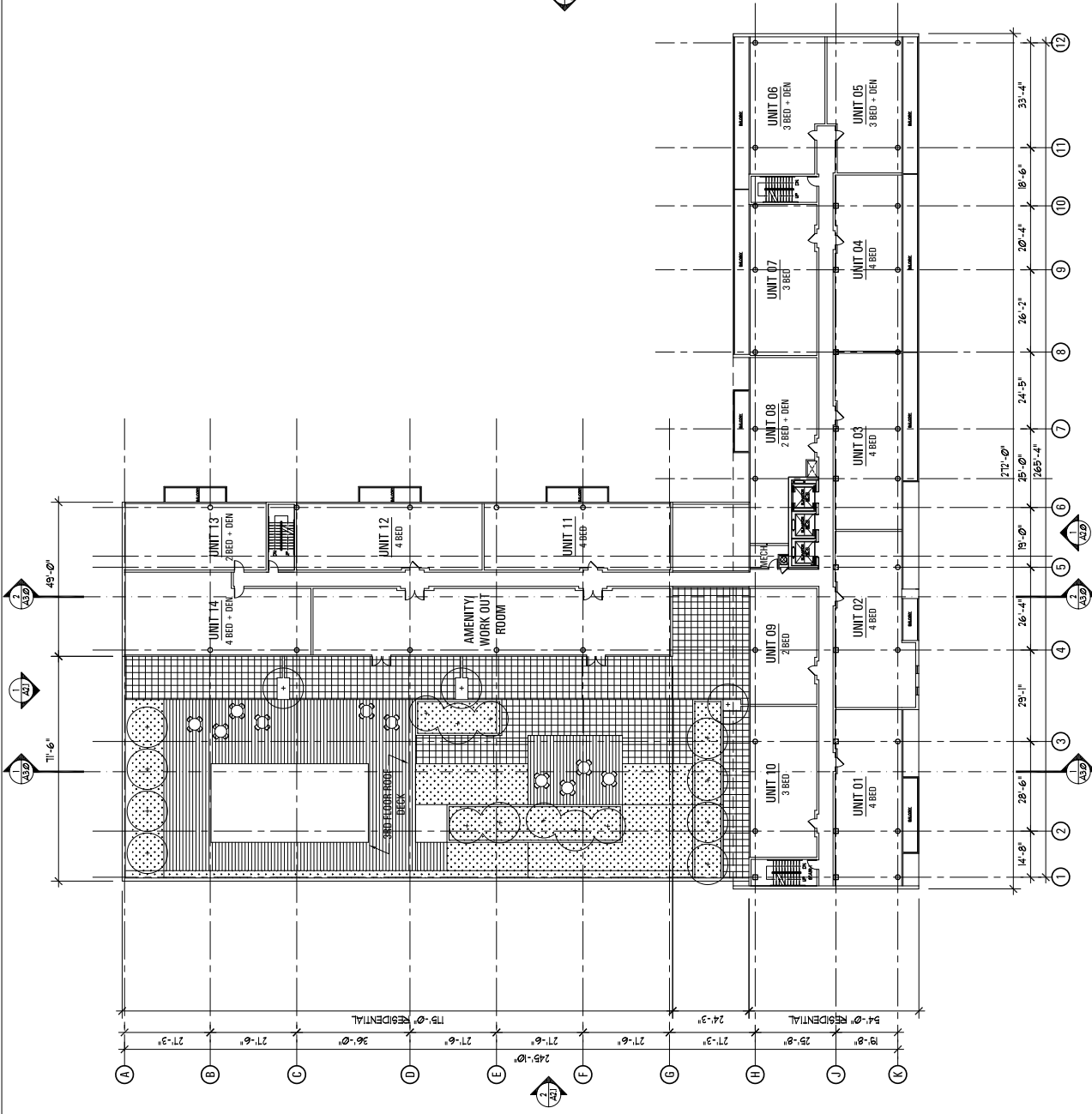
**campus edge**  
922 & 916 E. Apache Blvd.  
Tempe, AZ

DATE	ISSUED FOR
11-14-07	SITE PLAN REVIEW
12-15-07	PAID DPT SUBMITTAL
01-14-07	UPDATED PAID DPT SUB.

**hpa**  
Henderson Professional Architects  
100 North Corporate Center, Suite 100  
Phoenix, AZ 85001  
www.hendersonarchitects.com

DATE:	11/14/07
BY:	ML
SCALE:	1/16" = 1'-0"
PROJECT:	0000

SECOND FLOOR PLAN  
**A1.3**



1 THIRD FLOOR PLAN  
SCALE: 1/16" = 1'-0"



As a professional, I hereby certify that the above information is true and correct to the best of my knowledge and belief, and that I am a duly licensed professional in the State of Arizona. I am not providing this information for any other purpose than the one stated above. I am not providing this information for any other purpose than the one stated above. I am not providing this information for any other purpose than the one stated above.

**campus edge**  
922 & 916 E. Apache Blvd.  
Tempe, AZ

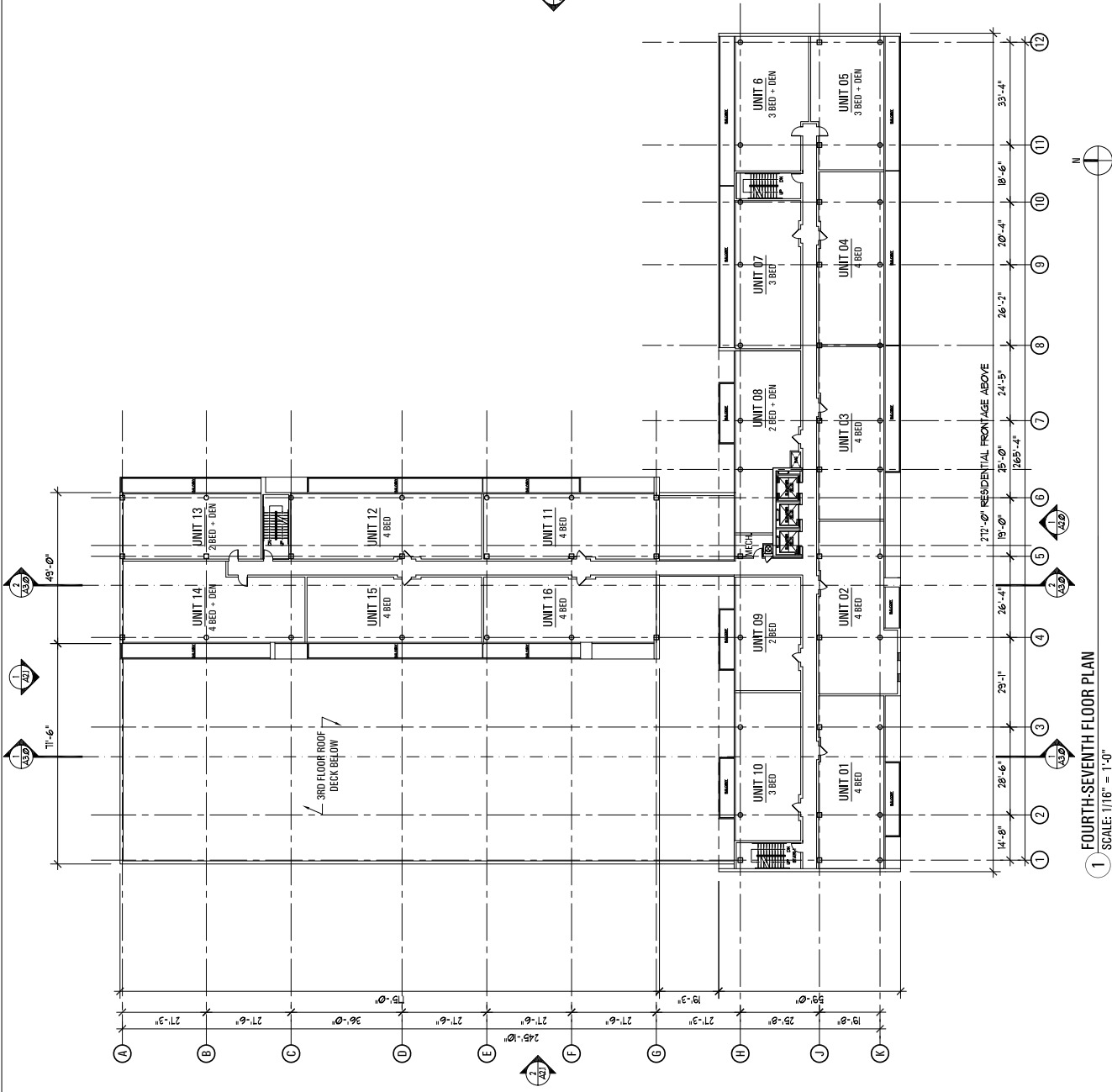
DATE	ISSUED FOR
11-14-07	SITE PLAN REVIEW
12-15-07	PAID DFP SUBMITTAL
01-14-07	UPDATED PAID DFP SUB.

**hpa**  
Henderson Professional Architects  
100 North Corporate Center S. Suite  
P.O. Box 1000  
Tempe, AZ 85281  
www.hendersonarchitects.com

DATE: 11/14/07  
SCALE: 1/16" = 1'-0"  
PROJECT: THIRD FLOOR PLAN  
SHEET: 003

**THIRD FLOOR PLAN**

**A1.4**



As a professional, I hereby certify that I am a duly Licensed Architect in the State of Arizona, and that I am the author of the design and construction documents herein. I am not providing these documents for any other project, and I am not providing these documents for any other purpose. I am not providing these documents for any other project, and I am not providing these documents for any other purpose.

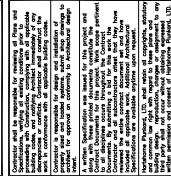
**campus edge**  
922 & 916 E. Apache Blvd.  
Tempe, AZ

DATE	ISSUED FOR
11-14-07	SITE PLAN REVIEW
12-15-07	PAID DPR SUBMITTAL
01-14-07	UPDATED PAID DPR SUB.



DATE:	11
BY:	11
SCALE:	1/16" = 1'-0"
PROJECT:	000

**FOURTH-SEVENTH FLOOR PLAN**  
**A1.5**

[illegible]

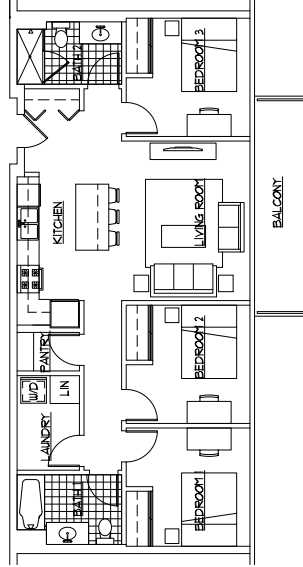
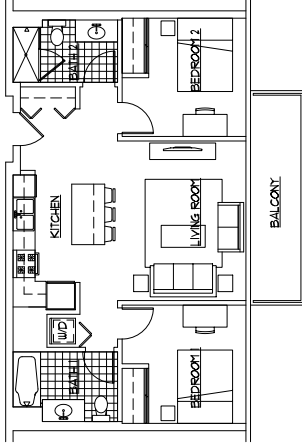
CK BY:	TH
DN BY:	TH JK
DATE:	10/07 (PROJECT START DATE)
SCALE:	1/16" = 1'-0"
PROJ. #	0783

**A1.6**

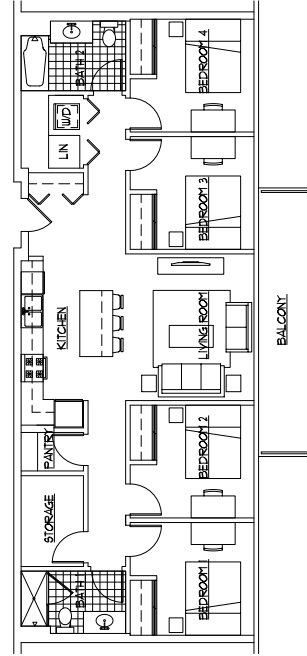




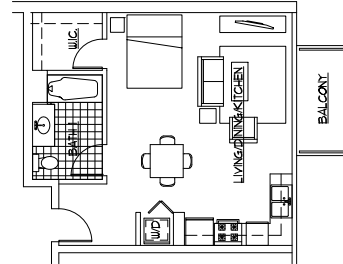
3  
TYPICAL 2-BEDROOM UNIT PLAN  
SCALE: 3/16" = 1'-0"



2  
TYPICAL 3-BEDROOM UNIT PLAN  
SCALE: 3/16" = 1'-0"



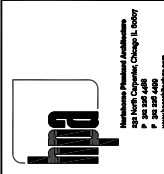
1  
TYPICAL 4-BEDROOM UNIT PLAN  
SCALE: 3/16" = 1'-0"



4  
TYPICAL STUDIO UNIT PLAN  
SCALE: 3/16" = 1'-0"

campus edge  
922 & 916 E. Apache Blvd.  
Tempe, AZ

DATE	ISSUED FOR
11-14-07	SITE PLAN REVIEW
12-25-07	PAID DPT SUBMITTAL
01-14-07	UPDATED PAID DPT SUB.



DATE:	11
PROJECT:	11
SCALE:	1/16" = 1'-0"
PROJECT START DATE:	01/01
PROJECT END DATE:	01/01

TYPICAL UNIT PLANS





2 EAST ELEVATION  
SCALE: 1/16" = 1'-0"



1 SOUTH ELEVATION - E. APACHE BLVD.  
SCALE: 1/16" = 1'-0"



Registration as an architect in the State of Arizona requires that the architect maintain a minimum of 12 hours of continuing education each year. The architect is responsible for maintaining the required continuing education hours. The architect is not responsible for the accuracy of the information provided in this document. The architect is not responsible for the accuracy of the information provided in this document. The architect is not responsible for the accuracy of the information provided in this document.

**campus edge**  
922 A 195 E Apache Blvd  
Tempe, AZ

DATE	ISSUED FOR
11-14-07	SITE PLAN REVIEW
12-05-07	PAID UP SUBMITTAL
01-14-08	UPDATED PAID UP SUB



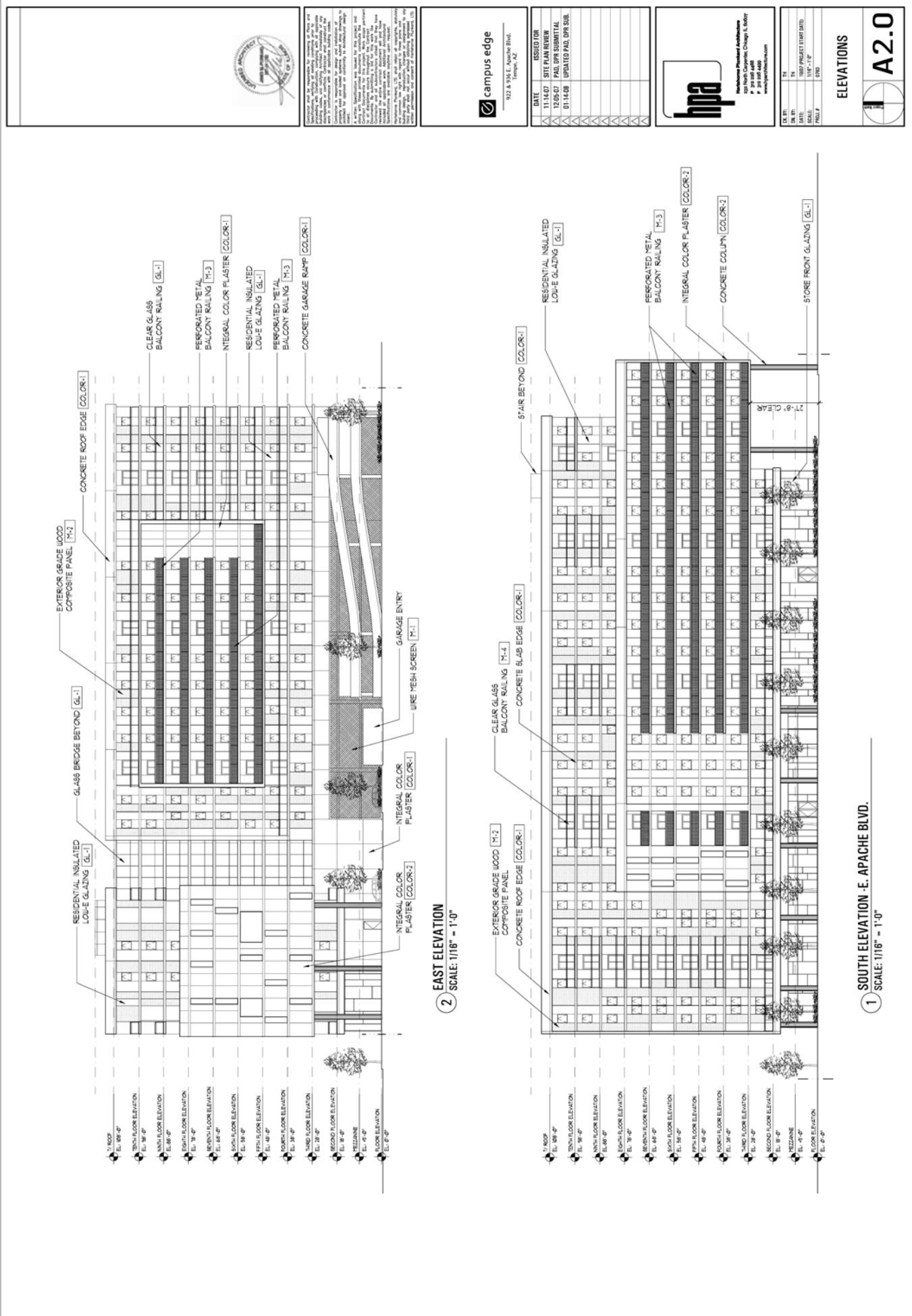
Hatch, Parsons & Associates  
120 North Corporate Center, Suite 100  
Tempe, AZ 85281  
PH: 480.961.1111  
WWW.HATCHPARSONS.COM

DATE	REVISION
11-14-07	100% PROJECT START DATE
01-14-08	100% PROJECT START DATE

ELEVATIONS



A2.0

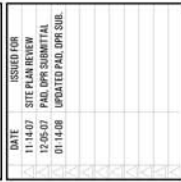






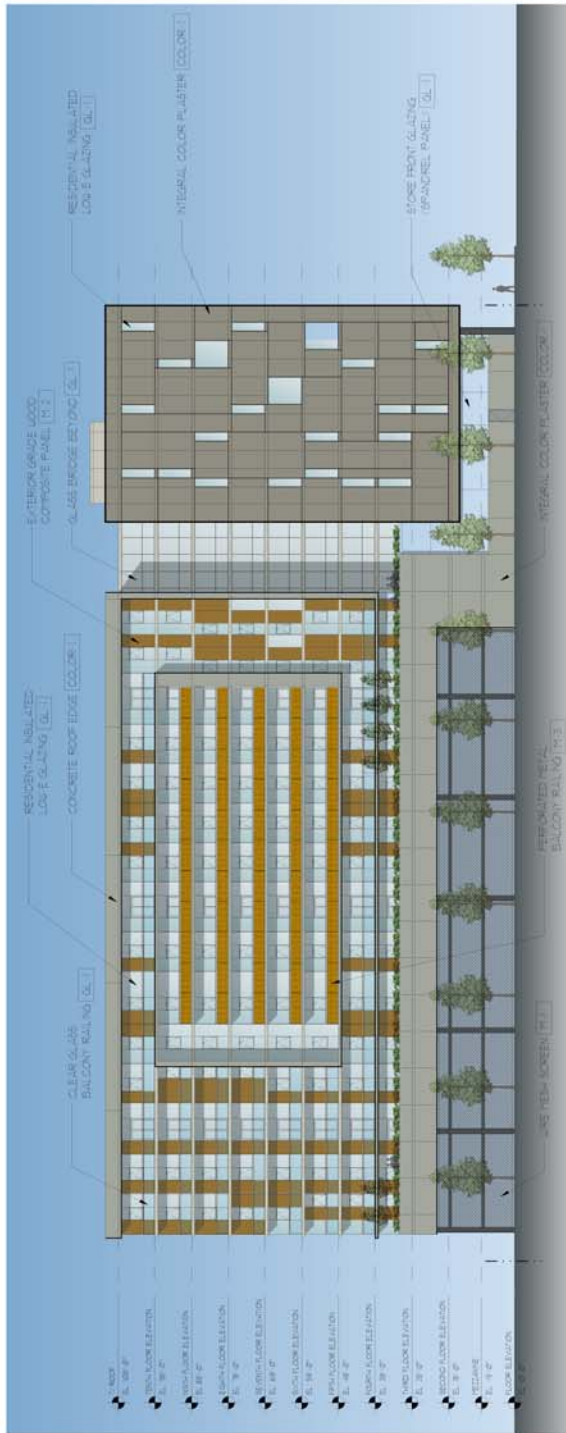
campus edge  
922 S 19th Avenue Blvd.  
Tempe, AZ

DATE	ISSUED FOR
11/14/07	SITE PLAN REVIEW
12/05/07	PAID UPR SUBMITTAL
01/14/08	UPDATED PAID UPR SUB.

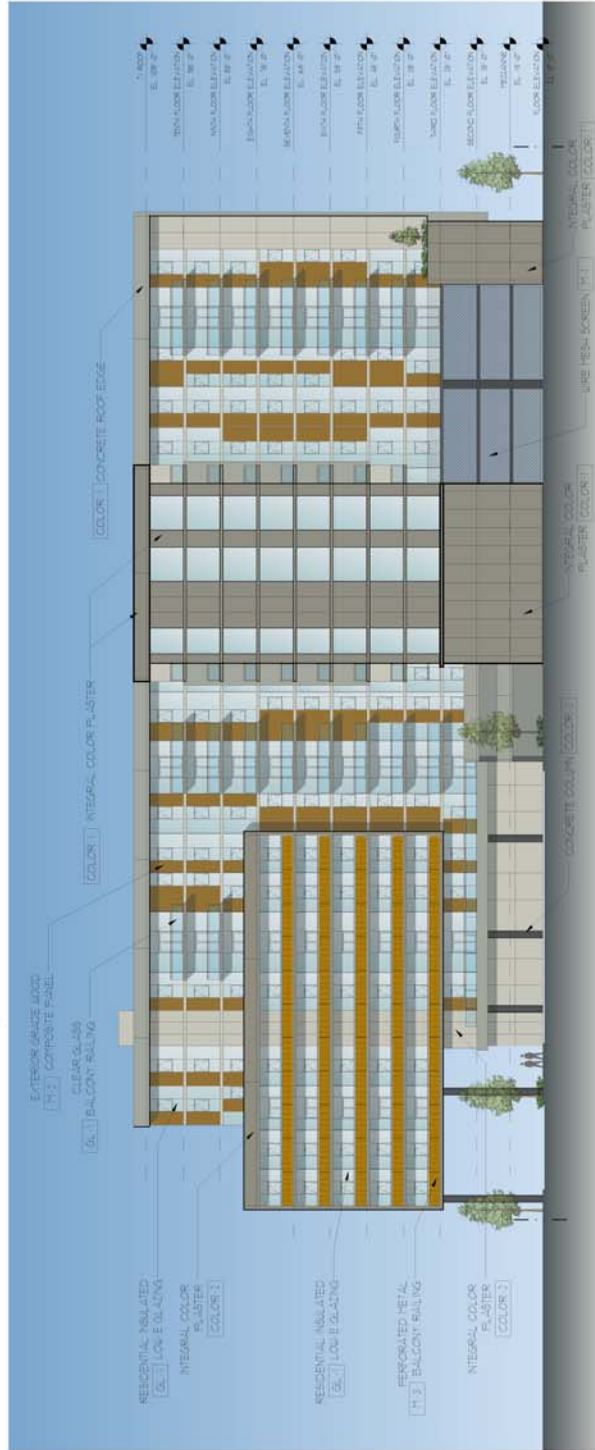


CL. #	TR
1	1ST FLOOR
2	2ND FLOOR
3	3RD FLOOR
4	4TH FLOOR
5	5TH FLOOR
6	6TH FLOOR
7	7TH FLOOR
8	8TH FLOOR
9	9TH FLOOR
10	10TH FLOOR
11	11TH FLOOR
12	12TH FLOOR
13	13TH FLOOR
14	14TH FLOOR
15	15TH FLOOR
16	16TH FLOOR
17	17TH FLOOR
18	18TH FLOOR
19	19TH FLOOR
20	20TH FLOOR
21	21ST FLOOR
22	22ND FLOOR
23	23RD FLOOR
24	24TH FLOOR
25	25TH FLOOR
26	26TH FLOOR
27	27TH FLOOR
28	28TH FLOOR
29	29TH FLOOR
30	30TH FLOOR
31	31ST FLOOR
32	32ND FLOOR
33	33RD FLOOR
34	34TH FLOOR
35	35TH FLOOR
36	36TH FLOOR
37	37TH FLOOR
38	38TH FLOOR
39	39TH FLOOR
40	40TH FLOOR
41	41ST FLOOR
42	42ND FLOOR
43	43RD FLOOR
44	44TH FLOOR
45	45TH FLOOR
46	46TH FLOOR
47	47TH FLOOR
48	48TH FLOOR
49	49TH FLOOR
50	50TH FLOOR
51	51ST FLOOR
52	52ND FLOOR
53	53RD FLOOR
54	54TH FLOOR
55	55TH FLOOR
56	56TH FLOOR
57	57TH FLOOR
58	58TH FLOOR
59	59TH FLOOR
60	60TH FLOOR
61	61ST FLOOR
62	62ND FLOOR
63	63RD FLOOR
64	64TH FLOOR
65	65TH FLOOR
66	66TH FLOOR
67	67TH FLOOR
68	68TH FLOOR
69	69TH FLOOR
70	70TH FLOOR
71	71ST FLOOR
72	72ND FLOOR
73	73RD FLOOR
74	74TH FLOOR
75	75TH FLOOR
76	76TH FLOOR
77	77TH FLOOR
78	78TH FLOOR
79	79TH FLOOR
80	80TH FLOOR
81	81ST FLOOR
82	82ND FLOOR
83	83RD FLOOR
84	84TH FLOOR
85	85TH FLOOR
86	86TH FLOOR
87	87TH FLOOR
88	88TH FLOOR
89	89TH FLOOR
90	90TH FLOOR
91	91ST FLOOR
92	92ND FLOOR
93	93RD FLOOR
94	94TH FLOOR
95	95TH FLOOR
96	96TH FLOOR
97	97TH FLOOR
98	98TH FLOOR
99	99TH FLOOR
100	100TH FLOOR

CL. #	TR
1	1ST FLOOR
2	2ND FLOOR
3	3RD FLOOR
4	4TH FLOOR
5	5TH FLOOR
6	6TH FLOOR
7	7TH FLOOR
8	8TH FLOOR
9	9TH FLOOR
10	10TH FLOOR
11	11TH FLOOR
12	12TH FLOOR
13	13TH FLOOR
14	14TH FLOOR
15	15TH FLOOR
16	16TH FLOOR
17	17TH FLOOR
18	18TH FLOOR
19	19TH FLOOR
20	20TH FLOOR
21	21ST FLOOR
22	22ND FLOOR
23	23RD FLOOR
24	24TH FLOOR
25	25TH FLOOR
26	26TH FLOOR
27	27TH FLOOR
28	28TH FLOOR
29	29TH FLOOR
30	30TH FLOOR
31	31ST FLOOR
32	32ND FLOOR
33	33RD FLOOR
34	34TH FLOOR
35	35TH FLOOR
36	36TH FLOOR
37	37TH FLOOR
38	38TH FLOOR
39	39TH FLOOR
40	40TH FLOOR
41	41ST FLOOR
42	42ND FLOOR
43	43RD FLOOR
44	44TH FLOOR
45	45TH FLOOR
46	46TH FLOOR
47	47TH FLOOR
48	48TH FLOOR
49	49TH FLOOR
50	50TH FLOOR
51	51ST FLOOR
52	52ND FLOOR
53	53RD FLOOR
54	54TH FLOOR
55	55TH FLOOR
56	56TH FLOOR
57	57TH FLOOR
58	58TH FLOOR
59	59TH FLOOR
60	60TH FLOOR
61	61ST FLOOR
62	62ND FLOOR
63	63RD FLOOR
64	64TH FLOOR
65	65TH FLOOR
66	66TH FLOOR
67	67TH FLOOR
68	68TH FLOOR
69	69TH FLOOR
70	70TH FLOOR
71	71ST FLOOR
72	72ND FLOOR
73	73RD FLOOR
74	74TH FLOOR
75	75TH FLOOR
76	76TH FLOOR
77	77TH FLOOR
78	78TH FLOOR
79	79TH FLOOR
80	80TH FLOOR
81	81ST FLOOR
82	82ND FLOOR
83	83RD FLOOR
84	84TH FLOOR
85	85TH FLOOR
86	86TH FLOOR
87	87TH FLOOR
88	88TH FLOOR
89	89TH FLOOR
90	90TH FLOOR
91	91ST FLOOR
92	92ND FLOOR
93	93RD FLOOR
94	94TH FLOOR
95	95TH FLOOR
96	96TH FLOOR
97	97TH FLOOR
98	98TH FLOOR
99	99TH FLOOR
100	100TH FLOOR



② WEST ELEVATION  
SCALE: 1/16" = 1'-0"



① NORTH ELEVATION  
SCALE: 1/16" = 1'-0"



922 & 936 E. Apache Blvd.  
Tucson, AZ

[illegible]

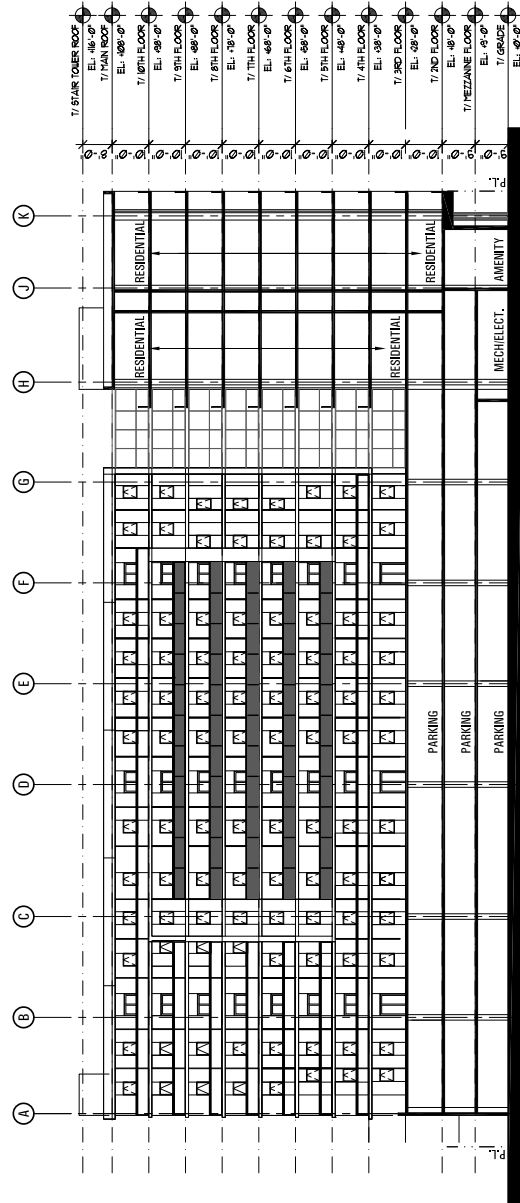
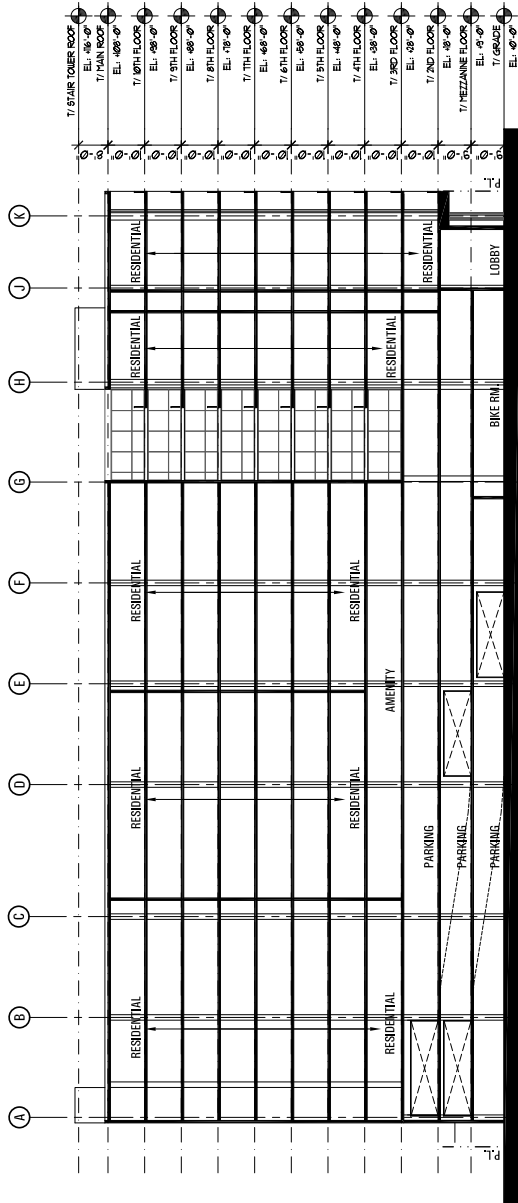
**Marshaorne Plunkard Architects**  
230 North Carpenter, Chicago IL 60607  
P 312 326 4488  
F 312 326 4490  
[www.holardarchitecture.com](http://www.holardarchitecture.com)

CK. BY:	TH
CM. BY:	TH
DATE:	1007 PROJECT START DATE
SCALE:	1/16" = 1'-0"
SHEET #	0703


## ELEVATIONS

## A2.1





<p>Contractor shall be responsible for securing all Plans and Specifications for review by the Engineer. The Contractor shall be responsible for providing the Engineer with all applicable drawings, specifications, and other documents. The Contractor shall be responsible for providing the Engineer with all applicable drawings, specifications, and other documents. The Contractor shall be responsible for providing the Engineer with all applicable drawings, specifications, and other documents.</p>	<p>Contractor shall be responsible for securing all Plans and Specifications for review by the Engineer. The Contractor shall be responsible for providing the Engineer with all applicable drawings, specifications, and other documents. The Contractor shall be responsible for providing the Engineer with all applicable drawings, specifications, and other documents. The Contractor shall be responsible for providing the Engineer with all applicable drawings, specifications, and other documents.</p>
--	--

 campus edge

922 & 936 E. Apache Blvd.  
Tempe, AZ

[illegible]

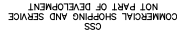
**Marlborough Plumbaid Architecture**  
232 North Carpenter, Chicago IL 60607  
P 312 226 4488  
F 312 226 4499  
[www.hyparchitect.com](http://www.hyparchitect.com)

CL BY:	YH
DN BY:	YH, JK
DATE:	1007 (PROJECT START DATE)
SCALE:	1/16" = 1'-0"
PROJ. #	0783

## BUILDING SECTIONS

## A3.0

BOTANICAL SYMBOL	COMMON	QTY'S SIZE	REMARKS
TREES:			
Geranium hybrid "Thomson"	"Sweet Maamun"	18 30' Box	Multi-Trunk, V shaped
Chamaelirium "Pink Dawn"	"Pink Dawn Chikapa"	8 24' Box	Multi-Trunk, Low branching
Bauhinia papayana	Giant Gum	11 30' Box	Standard
SHRUBS:			
Agave salmiana	Hemp Plant	35 8 GAL.	
Eranthis maculata "Vanilla"	Red Erin Bush	20 8 GAL.	
Flax parviflora "Whimsy"	Creeching Pig	3 8 GAL.	
Lantana spicata "New Gold"	New Gold Lantana	128 1 GAL.	
Muhlenbergia rigida "Vanilla"	Purple Ashby	86 1 GAL.	
Ruellia brittanica "Yulet"	Katie Ruelias	210 1 GAL.	
Troxen hybrid "Orange Jubilee"	Orange Jubilee	32 8 GAL.	
INERT GROUNDCOVER:			
Groundcover Granite	Nature Gold	13,100 S.F.	1" Minus



**campus edge**  
922 & 936 E. Apache Blvd.

[illegible]

**engineering and  
environmental design**  
4649 E. COTTON CIRCLE, SUITE B2  
PHOENIX, AZ 85044  
PHONE: (602) 348-2221  
FAX: (602) 348-2225  
www.ewdaz.com

CK BY:	AAA
DN BY:	ATH
DATE:	12-1-07
SCALE:	1"=20'-0"
12 PROJ. #	07.0183

LANDSCAPE PLAN

